

5 B $\flat$

# Sonata in Re

GT 5.D02

Giuseppe Tartini

arr. Anna Molaro

**Allegro assai**

6

12

17

23

28

33

39

45

50

*f*

*mp*

*f*

*f*

*p*

*f*

*mf*

*p*

*mf cresc.*

*f*

*f*

*p*

*f*

*f*

*p*

*f*

*f*

55

60

65

71

Staff 55-64: Treble clef, key of D major (F# C# G# D). Measures 55-64. Dynamics: *p* (measures 57, 59, 61, 63), *f* (measures 60, 62).

Staff 60-64: Treble clef, key of D major. Measures 60-64. Dynamics: *f* (measures 60, 61), *p* (measures 62, 63), *f* (measure 64).

Staff 65-70: Treble clef, key of D major. Measures 65-70. Dynamics: *p* (measures 65, 67, 69), *f* (measures 66, 68, 70).

Staff 71-75: Treble clef, key of D major. Measures 71-75. Dynamics: *p* (measures 71, 73, 75).

## Larghetto

6

12

18

24

29

Staff 1-5: Treble clef, key of D major, common time. Measures 1-5. Dynamics: *f* (measure 1).

Staff 6-11: Treble clef, key of D major, common time. Measures 6-11. Dynamics: *p* (measure 10).

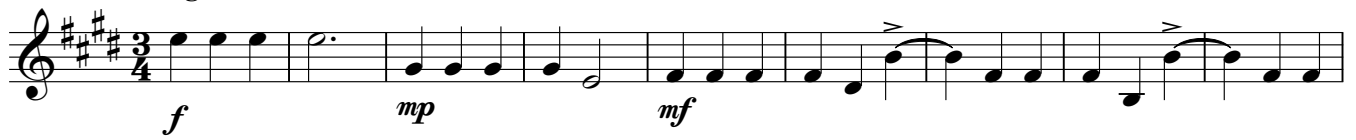
Staff 12-17: Treble clef, key of D major, common time. Measures 12-17. Dynamics: *mf* (measure 13), *f* (measures 15, 17).

Staff 18-23: Treble clef, key of D major, common time. Measures 18-23. Dynamics: *f* (measures 18, 19), *p* (measure 20), *f* (measures 21, 22).

Staff 24-28: Treble clef, key of D major, common time. Measures 24-28. Dynamics: *p* (measure 26).

Staff 29-33: Treble clef, key of D major, common time. Measures 29-33. Dynamics: *più p* (measure 29), *f* (measure 31).

## Allegro



10



19



28

## Allegro



36



46



55



64



73



82



91



98

